

All rights reserved by **CNH Industrial**.

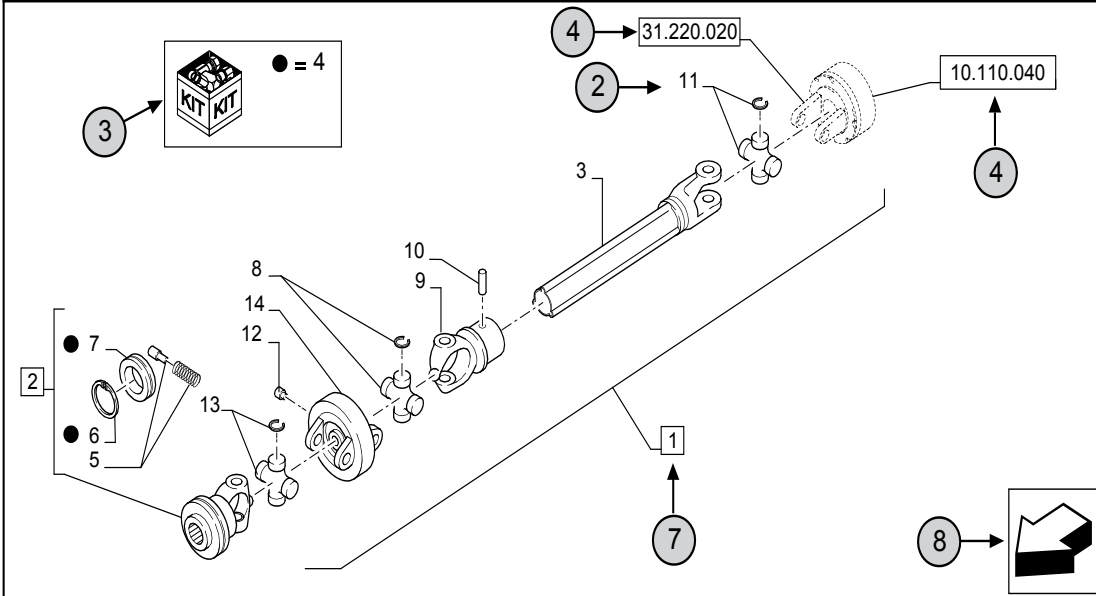
The information contained in this catalogue is intended to be of a general nature only. **CNH Industrial** may at any time and from time to time, for technical or other necessary reasons, modify any of the details or specifications of the product described in this catalogue.

To be sure of getting accurate, detailed and up-to-date information, an intending buyer should consult his nearest **CNH Industrial** dealer or distributor.

Single item numeration method used in this catalogue may not be used without written consent from **CNH Industrial**

31.220.010	01	p1	10/2014
------------	----	----	---------

VAR - 123782, 789101,987654 - PTO - D650



STANDARD ← (6)

(23)	(9)	(10)	31.220.010	01	p1	10/2014
------	-----	------	------------	----	----	---------

VAR - 123782, 789101,987654 - PTO - D650

(11) (12) (13) (14)

REF	FN	PART NUMBER	YR/SN	QTY	DESCRIPTION
1	1	86529340	(20)	1	SHAFT PTO, Incl 2 - 11
2	(15)	84014007		1	YOKE, Incl 4 - 7 ← (7)
3	(16)	NSS		1	NOT SERVICED SEPARATELY, SHAFT, 350mm, Incl in 1
4		84004292		1	KIT, Seal Kit, Incl 6, 7 (17)
4		{84058743}		1	KIT, Seal Kit, Incl 6, 7
(2)	(18)	(19)		(21)	(22)
1 = FOR ITALY ONLY ← (5)					

MODELS ← (1)


- 1 Model Number and Model Description
- 2 Reference - Figure call-out of the part number.
- 3 Parts supplied in repair kits per symbol reference.
- 4 31.220.020 Part illustrated on the **Page** or in the **Figure** indicated, or calls for **Variations** or **Details**. Indicates components shown in detail elsewhere in the catalogue under the figure number shown.
- 5 Footnote references
- 6 Figure notes
- 7 1 2 Includes item(s) (See Description within partlist).
- 8 Orientation. (Arrow indicates front of the machine). 
- 9 Figure description.
- 10 General information of the figure.
- 11 Figure title number that aligns with the SRT. Standard Repair Time.
- 12 **Sequence** code within the assembly.
- 13 Page number within the sequence code.
- 14 **Date** of printing or updating of page (month-year).
- 15 **Note** - Relating to the Part Number. There is a key to symbols and abbreviations at the bottom of the text page.
- 16 Non-serviced parts.
- 17 Further description of the part to help confirm identification.
- 18 Not available as service part.
- 19 Part Number.
- 20 To be defined.
- 21 Total **Quantity** of the Part referred to in the page.
The quantity can be replaced by the following indications:
AR = quantity as requested.
- 22 Part **Description**.
- 23 Variant Codes

TABLE OF CONTENTS

01.10.01		ALTERNATOR KIT, 75AMP
05.100.03	01	FILTERS
05.100.03	02	CAPACITIES
01.01		CYLINDER BLOCK
01.01.01		ATTACHING HARDWARE ENGINE TO TRANSMISSION
01.02		CAMSHAFT
01.03		CYLINDER HEAD
01.04		HEAD COVER
01.05		ROCKER ARM
01.06		CRANKSHAFT & PISTONS
01.07		TIMING GEAR CASE
01.08		OIL PUMP, WATER PUMP & FAN
01.09		AIR DEFLECTOR GUARD
01.10		ALTERNATOR ASSEMBLY
01.11		STARTING MOTOR
01.12		BALANCER
01.13		FUEL INJECTION PUMP & LINES
01.13.02		FUEL INJECTOR
02.01		RADIATOR-CONDENSOR W/CAB
02.02		OIL COOLER
02.02.01		OIL COOLER TUBES
02.03		FUEL TANK
02.04		AIR CLEANER
02.04.01		AIR CLEANER BRACKET
02.04.02		AIR CLEANER BRACKET
02.05		EXHAUST SYSTEM
02.06		FUEL FILTER
02.07		HAND THROTTLE ASSEMBLY
02.08		KIT FUEL FILTER O-RING
03.01		PARKING BRAKE
03.02		BRAKE, HST
03.03		BRAKE PEDALS, HST
03.03.01		FORWARD & REVERSE PEDALS, HST
03.04.01		CLUTCH, HST
03.04.02		CLUTCH ASSEMBLY, PTO
03.06		FRONT TRANSMISSION CASE & SHIFTER, HST

TABLE OF CONTENTS

03.09		FRONT TRANSMISSION GEARS, HST
03.10		LH LEVERS W/FWD
03.11		FWD CONTROL LEVERS WITH SUPERSTEER
03.12		DIFFERENTIAL LOCK CONTROLS HST
03.13		REAR TRANSMISSION PTO DRIVE, UPPER
03.13.02		CONTROL VALVE, PTO
03.14		REAR TRANSMISSION PTO DRIVE, LOWER
03.15		FWD DROP BOX AND DRIVE SHAFT
03.16		REAR TRANSMISSION, MID PTO
03.17		MID-PTO KIT, 2000 RPM - 719801036
03.18		HST ASSEMBLY
04.01		FRONT AXLE, FWD
04.02		FRONT AXLE, SUPERSTEER
04.05		FRONT AXLE & STEERING W/FWD
04.05.01		POWER STEERING CYLINDER ASSEMBLY, W/FWD
04.06		FRONT AXLE & STEERING W/SUPERSTEER
04.06.01		POWER STEERING CYLINDER ASSEMBLY, W/SUPERSTEER
04.08		POWER STEERING HOSES
04.09		POWER STEERING PUMP ASSEMBLY
04.10		FRONT DIFFERENTIAL GEARS W/FWD
04.11		FINAL REDUCTION GEARS, W/FWD
04.12		UNIVERSAL JOINT W/SUPERSTEER
05.01		REAR AXLE DIFFERENTIAL & LOCK LINKAGE
05.02		REAR AXLE BRAKE & WHEEL SHAFT
05.100.03	01	FILTERS, BOOMER 3040 & 3045 HST W/CAB
05.100.03	02	CAPACITIES, BOOMER 3040 & 3045 HST W/CAB
06.01		WIRE HARNESSSES
06.02		ELECTRICAL COMPONENT LOCATION & FUNCTION
06.03		BATTERY & BATTERY PLATE
06.04		FUSES
06.06		RELAYS, DIODES & MODULES
06.07		IGNITION KEY SWITCH & KEYS
06.08		REAR PTO SAFETY SWITCH
06.10		FRONT & REAR LAMPS
06.11		INSTRUMENT PANEL
06.12		LIGHT,TURN SIGNALS,HORN SWITCH, HAZARD (FLASHING WARNING LIGHTS) SWITCH, WORKLIGHT SWITCH

TABLE OF CONTENTS

06.13	ELECTRIC CRUISE CONTROL SWITCH & HI/LO RANGE SELECTOR SWITCH
06.14	AUXILIARY POWER OUTLET
06.18	ROTATING BEACON KIT - 710762026
06.19	WORKLIGHTS
07.01	HYDRAULIC LIFT COVER & ARMS
07.02	HYDRAULIC LIFT COVER, HEAD ASSEMBLY
07.03	HYD CONTROL VALVE, QUADRANT & L/DRAFT CONTROL - HST
07.03.01	HPL CONTROL VALVE ASSEMBLY - SBA340016350
07.03.02	HPL POSITION CONTROL LEVER
07.03.03	HPL DROP RATE CONTROL
07.06	FIRST REAR REMOTE VALVE KIT, SELF-CENTERING - 710366036
07.07	SECOND REAR REMOTE VALVE KIT, SELF-CENTERING - 718334026
07.08	THIRD REAR REMOTE VALVE KIT, SELF-CENTERING - 719339026
07.08.01	REAR REMOTE CONTROL VALVE
07.09	HYD OIL PUMP & PIPING, POWER STEERING PUMP
07.09.01	MANIFOLD DIVERTER BLOCK - SBA340016621
07.09.02	HYDRAULIC OIL PUMP
07.10	HYD OIL FILTER & PIPING
07.11	HYDRAULIC PIPING W/HST
07.12	HYD PIPING & OIL COOLER, W/HST
07.15	TWO FUNCTION MID-MOUNT HYDRAULIC CONTROL VALVE KIT - 719918046 - CAB W/HST
07.16	MID-MOUNT HYDRAULIC CONTROL VALVE - 87571203
07.17	TUBE SUPPORT BRACKET FOR MID-MOUNT TUBE KIT LESS LOADER & TOWER.
08.01	FENDERS
08.03	TOOLBOX
08.04	SMV MOUNTING
08.05	HOOD
08.06	HOOD HEADLAMPS & HARDWARE
08.11	GRILLE GUARD KIT - DIA KIT, P/N 719849056
08.11.01	CHROME GRILLE GUARD KIT - 719849206
08.12	DECALS, IDENTIFICATION
08.13	DECALS, OPERATING
08.14	DECALS, WARNING
09.02	DELUXE 3PT HITCH, REAR COUNTERWEIGHT BRACKET & PTO SHIELD
09.03	DELUXE DRAWBAR ASSEMBLY
09.04	DRAWBAR KITS

TABLE OF CONTENTS

10.01	CAB
10.01.01	GAS SPRING, CUP HOLDER, INSULATION, MISCELLANEOUS
10.01.02	CAB MOUNT WITHOUT LOADER
10.01.03	CAB MOUNT WITH LOADER
10.01.04	CAB FINISHING GROUP
10.02	ROOF
10.03	HEADLINER
10.04	DOOR, LH
10.05	DOOR, RH
10.06	REAR WINDOW
10.08	FLOOR MAT & DECK
10.09	DELUXE NON/SWIVEL SEATS & ARM REST KIT - 718852026
10.09.01	DELUXE SWIVEL SEATS & ARM REST KIT - 718852026
10.10	POD TOPS
10.11	CONSOLE, CAB
10.12	HOOD, REAR OUTSIDE (ONE PIECE)
10.13	FIREWALL
10.13.01	HORN & BRACKET
10.14	STEERING COLUMN, TILT
10.15	HVAC BOX
10.15.01	HVAC
10.15.02	HEATER, EVAPORATOR
10.15.03	HVAC CONTROLS
10.15.04	HOSES, HVAC
10.15.05	HEATER HOSE FITTINGS, CLAMPS, CABLE TIE
10.16	COMPRESSOR MOUNT
10.17	REAR WINDSHIELD WIPER/WASHER DIA - 710642016
10.17.01	FRONT WINDSHIELD WIPER/WASHER
10.18	FRONT SUNVISOR
10.19	OUTSIDE MIRRORS & INSIDE MIRRORS
10.20	CAB ROOF SKYLIGHT BRUSH GUARD KIT - 718002006
10.21	STEPS
10.22	TIE DOWN
11.01	FRONT WHEELS
11.02	REAR WHEELS
11.03	FRONT END WHEEL WEIGHTS - 710215016 & 718215036,WEIGHT CARRIER - 718233006 & WEIGHT ADAPTER BRACKET SUPERSTEER - 719233056

TABLE OF CONTENTS

11.04	REAR WHEEL WEIGHTS, 105 LBS AG BAR & INDUSTRIAL WHEELS ONLY - 710470026
11.05	BALLAST BOX - 715655006

SECTION INDEX

GENERAL

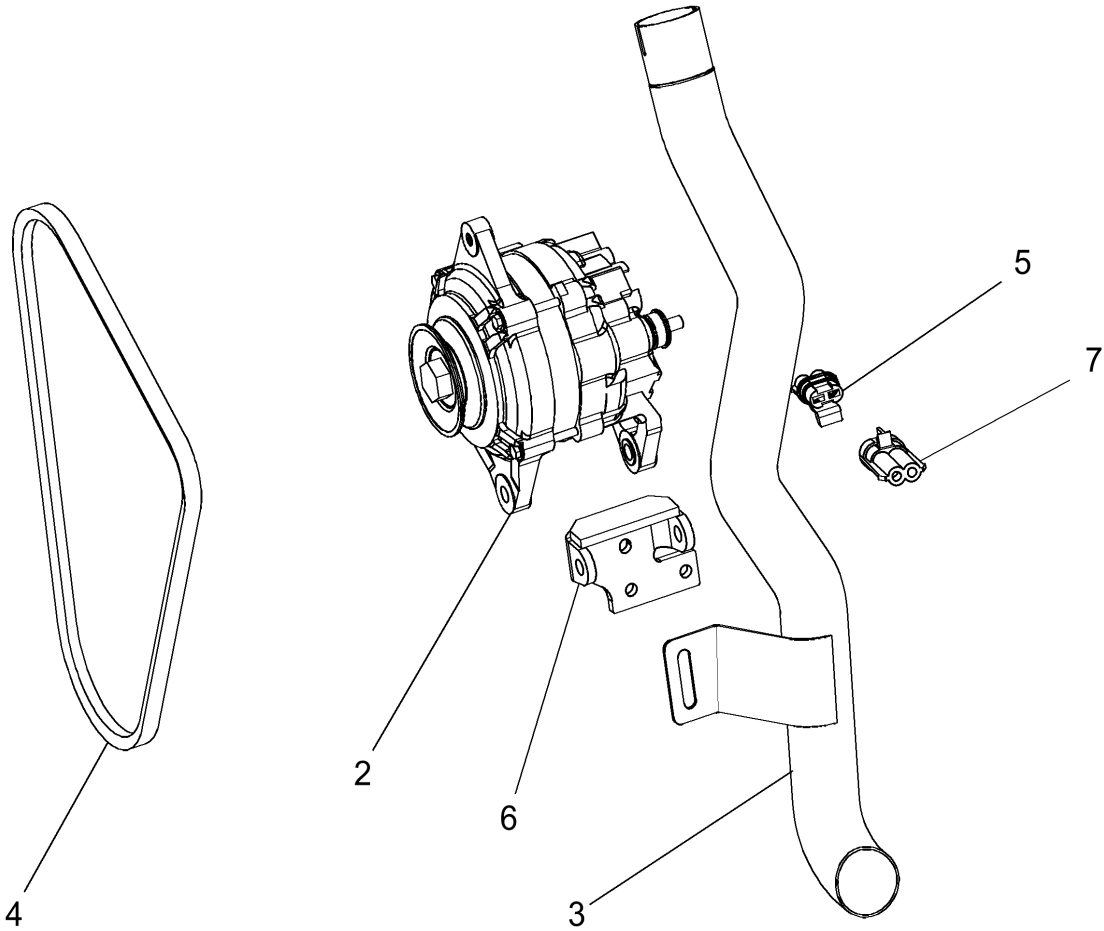
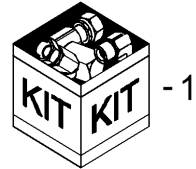
01.10.01		ALTERNATOR KIT, 75AMP
05.100.03	01	FILTERS
05.100.03	02	CAPACITIES

01.10.01

p1

8/2017

ALTERNATOR KIT, 75AMP

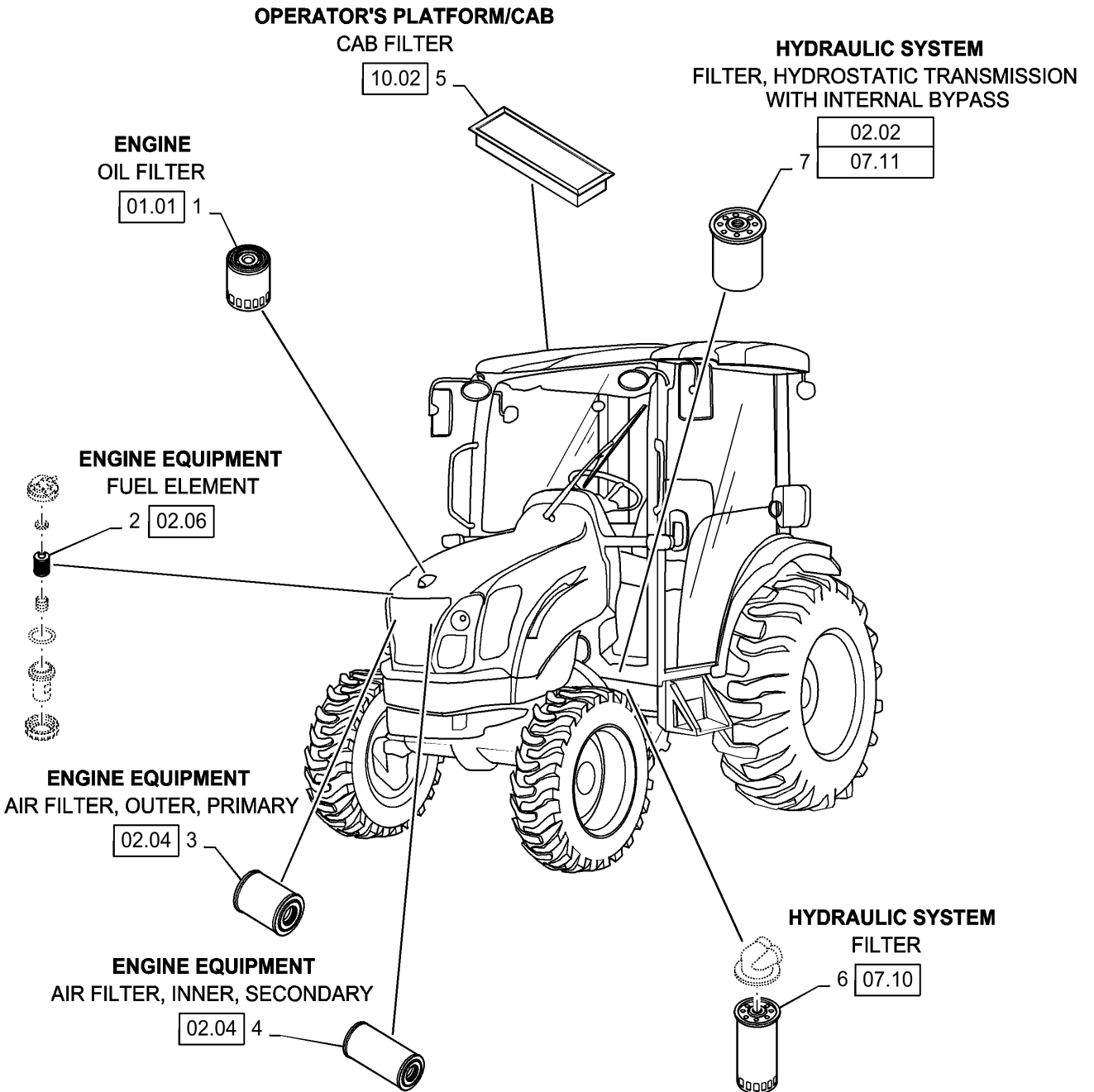


ALTERNATOR KIT, 75AMP

REF FN	PART NUMBER	YR/SN	QTY DESCRIPTION
1	84174294		1 DIA KIT, TRACTOR Alternator 75AMP Includes: Ref. 2-13
2	87614402		1 ALTERNATOR 75AMP
3	84159953		1 EXHAUST SYSTEM PIPE Pipe, Exhaust System
4	87499975		1 V-BELT 12.45 mm W x 974.50 mm L Fan
5	84172801		1 MULTIPOLE CONNECTOR Female, 2 Pole
6	84173612		1 BRACKET Bracket
7	84172817		1 MULTIPOLE CONNECTOR Male, 2 Pole Male
8	1 84172828		2 TERMINAL Position Assurance
9	1 84172827		2 TERMINAL CONNECTOR Male
10	1 84172823		4 SEAL Cable
11	1 84172825		2 TERMINAL CONNECTOR Female
12	1 84183837		1 FUSE 80A, Maxil, Natural 80A Maxi
(1)	Not Illustrated		

**BOOMER 3040-COMPACT TRACTOR - HST TRANSMISSION W/CAB
(NA) BOOMER 3045-COMPACT TRACTOR - HST TRANSMISSION
W/CAB (NA)**

FILTERS

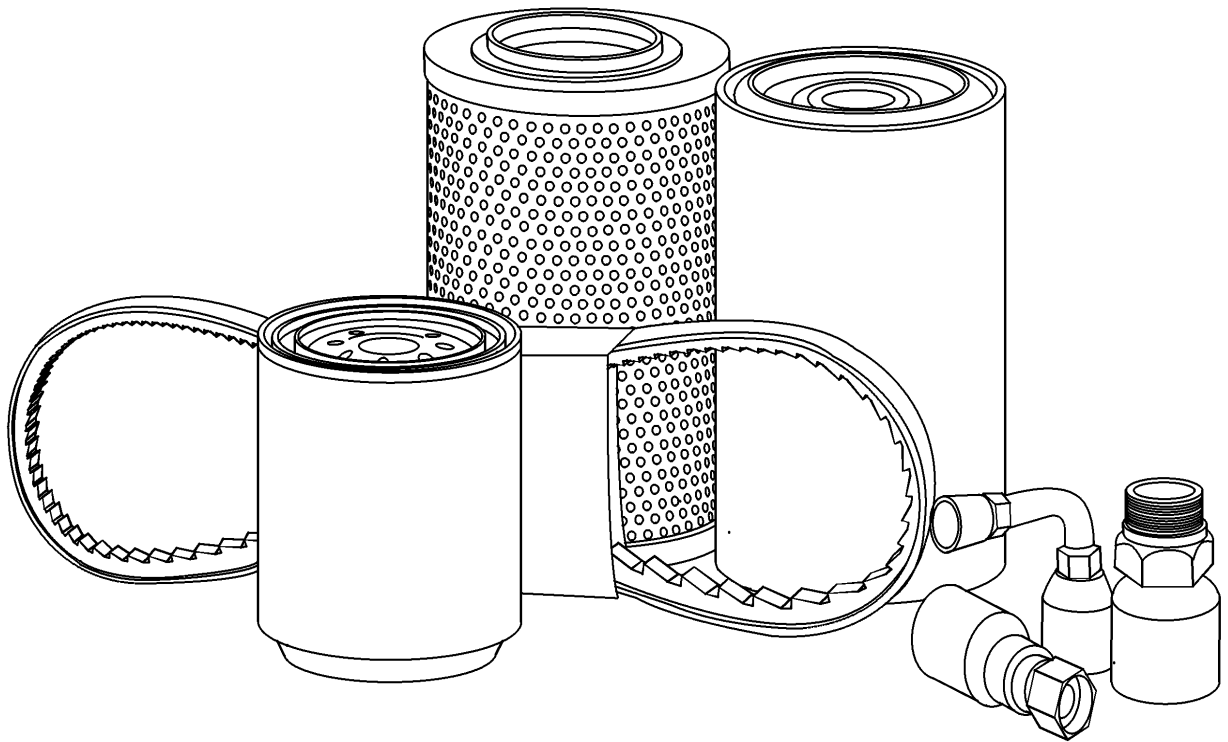


FILTERS

REF FN	PART NUMBER	YR/SN	QTY DESCRIPTION
1	84475542		1 ENGINE OIL FILTER Spin-On
2	84477366		1 ELEMENT Fuel
3	87682998		1 AIR FILTER Engine, Primary Outer
4	84539215		1 AIR FILTER Engine, Secondary Inner
5	248124A1		1 AIR FILTER Cab
6	SBA340500920		1 HYDRAULIC OIL FILTER Hydrostatic Transmission (HST)
7	SBA340501030		1 FILTER Hydrostatic Transmission (HST) With Internal Bypass Valve

**BOOMER 3040-COMPACT TRACTOR - HST TRANSMISSION W/CAB
(NA)**

CAPACITIES



CAPACITIES

REF FN	PART NUMBER	YR/SN	QTY DESCRIPTION
*	CNH XHD COOLANT		ANTIFREEZE Coolant, 9.6-QT (9.1L)
*	M-GOLD SAE15W40		OIL Engine, 15W40, W/ Filter, 1.58-Gal (6L)
*	MULTI G 134		OIL Hydraulics, HST, 9.6-Gal (36.3L)
*	MULTI G 134		OIL Front Axle, Hubs and Differential Each-FWD Only, Planetaries, 8.9-OZ
*	MULTI G 134		OIL Front Axle, Hubs and Differential Each-FWD Only, 134D, Differential, 1.4-Gal (5.3L)

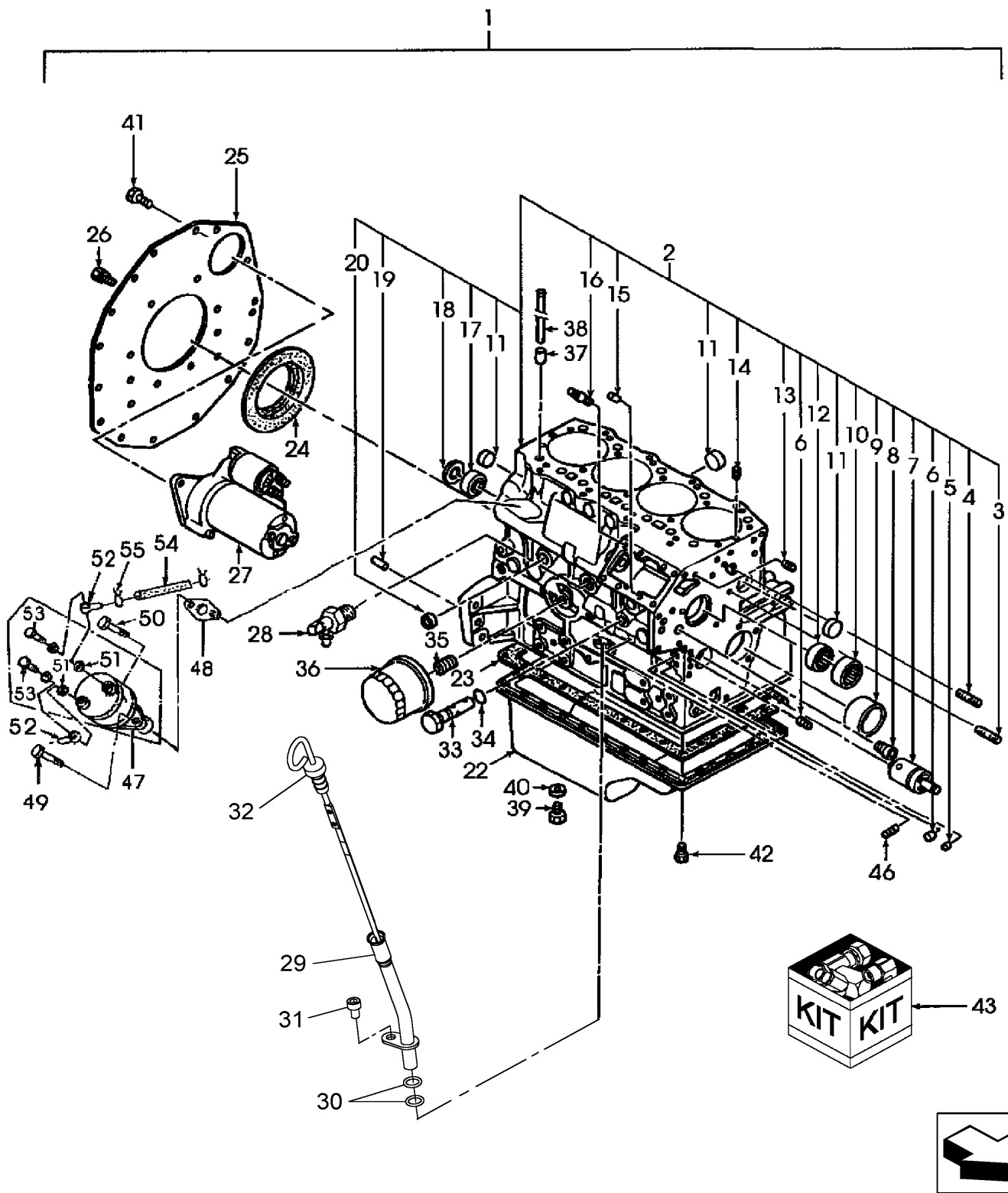
**BOOMER 3040-COMPACT TRACTOR - HST TRANSMISSION W/CAB
(NA)**

SECTION INDEX

ENGINE

01.01	CYLINDER BLOCK
01.01.01	ATTACHING HARDWARE ENGINE TO TRANSMISSION
01.02	CAMSHAFT
01.03	CYLINDER HEAD
01.04	HEAD COVER
01.05	ROCKER ARM
01.06	CRANKSHAFT & PISTONS
01.07	TIMING GEAR CASE
01.08	OIL PUMP, WATER PUMP & FAN
01.09	AIR DEFLECTOR GUARD
01.10	ALTERNATOR ASSEMBLY
01.11	STARTING MOTOR
01.12	BALANCER
01.13	FUEL INJECTION PUMP & LINES
01.13.02	FUEL INJECTOR

CYLINDER BLOCK



Complete engines are typically not available. Recommendation is to order the Long Block through PAL. Long Blocks as listed in PAL are complete engines less the starter, belts, alternator, flywheel.

**Thanks very much for your reading,
Want to get more information,
Please click here, Then get the complete
manual**

JustClickHere 

NOTE:

**If there is no response to click on the link above,
please download the PDF document first, and then
click on it.**

**Have any questions please write to me:
admin@servicemanualperfect.com**